



News Lines

Above: Line Crews worked long hours restoring power to members in the aftermath of the April 26 tornado

Storm highlights resilient co-op spirit

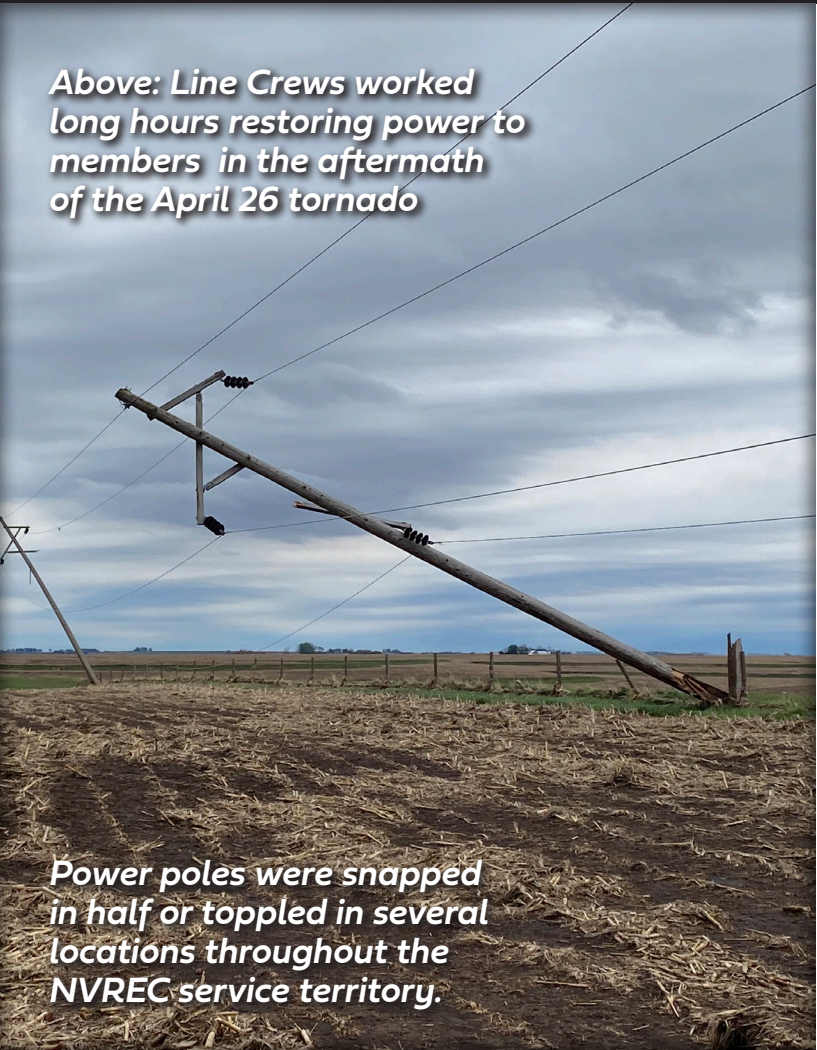
Tornado causes severe damage, outages in co-op service area

A tornado ripped through the Nishnabotna Valley REC (NVREC) service area on Friday, April 26, leaving a swath of destruction in its wake. Touching down near the town of Minden in Pottawattamie County, the twister traveled northeast into Shelby County, passing a mile west of Harlan, before terminating after its 30-mile journey just east of Defiance. Along its path lay dozens of broken or toppled power poles and more than five miles of downed power lines.

NVREC crews responded immediately to begin restoration efforts. They were joined by linemen from Midland Power Cooperative and Northwest Iowa Power Cooperative. Together, the crews worked 16-hour days to rapidly restore service. At the peak, more than 900 NVREC members were without power.

Working well into the night, crews were able to begin restoring members, and by Saturday evening, all but a handful of members who could receive power were back in service.

Power poles were snapped in half or toppled in several locations throughout the NVREC service territory.



Nishnabotna Valley REC
A Touchstone Energy Cooperative

MAY/JUNE 2024



***Our hearts go out to all of our member-owners who were affected by the tornado on April 26.
Your patience and understanding during the resulting outages was truly appreciated.
We would like to thank community members and businesses for
your generous donations and thoughtful assistance.***



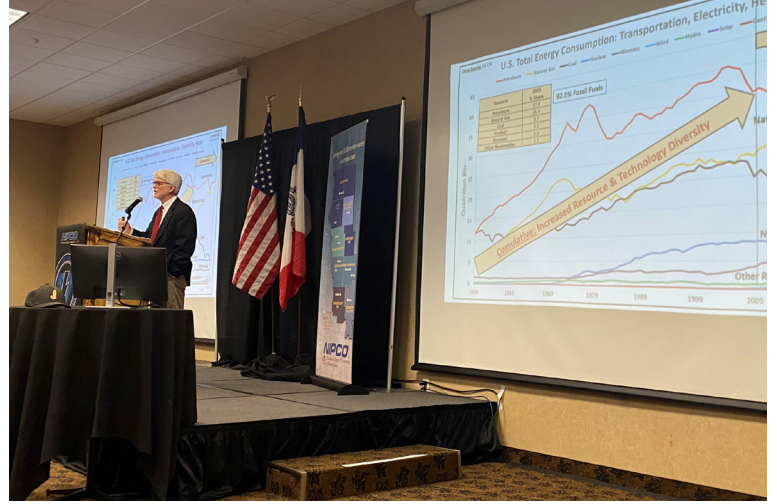
***Crews from Midland Power Cooperative
joined NVREC crews to restore service
after the April 26 storm.***



NIPCO celebrates 75 years at annual meeting, looks to build on storied past



(l-r) Nishnabotna Valley REC directors Tom Pattee, Darrell Stamp, Gene Kenkel, Donna Olson, Bryan Greve and Dave Applegate.



Keynote speaker David Gattie discussed international energy policy and potential global security implications.

Northwest Iowa Power Cooperative (NIPCO) marked its 75th year anniversary last month during its annual meeting in Sioux City.

With a message centered around celebrating NIPCO's historic journey and ongoing efforts to prepare for the future, the April 2 meeting brought together directors and staff from Nishnabotna Valley REC and the generation and transmission provider's six other member distribution cooperatives.

Through a series of video reports, NIPCO directors, including Board President Louis Reed and Treasurer Tom Wagner, detailed how the organization is working to build upon its legacy to ensure reliable and affordable wholesale power well into the future.

Former and current employees were also featured in brief video interviews detailing how their positions, like NIPCO and electric utility industry, has evolved over time.

The meeting's keynote speaker, Da-

vid Gattie, focused on the geopolitical and national security implications of energy policy and addressed how global energy technology challenges could ultimately impact the United States. Gattie, an associate professor at the University of Georgia, is well known for his research on energy security and the national security implications of nuclear power.

Based in Le Mars, NIPCO provides generation and transmission services to Nishnabotna Valley REC.

Shining the light on community volunteers in June

Guided by our cooperative commitment to community, Iowa's electric co-ops are excited to once again participate in the statewide Shine the Light contest in June to celebrate local volunteers.

Sponsored by the Touchstone Energy Cooperatives of Iowa, the contest will accept nominations beginning June 1 and select three winners who will each receive a \$3,000 donation to their local charity or non-profit organization.

"We've been truly inspired by the contest entries we received in our first two years," remarked Erin Campbell, director of communications for the Iowa Association of Electric Cooperatives. "We're in-

creasing each of our three charity donations from \$2,500 to \$3,000 this year to encourage even more participation across the state."

Member-consumers and employees of Iowa's electric cooperatives are eligible to nominate local volunteers during the month of June.

If you receive electricity from Nishnabotna Valley REC, you're a co-op member-owner and we encourage you to nominate someone who is making a positive impact in the community.

The volunteer being nominated does not need to be a co-op member-consumer. Minors may be nominated with consent from their parents or legal guardians.

Visit IowaShineTheLight.com for contest rules and to submit an entry.



Scholarships awarded to students from area schools

Nishnabotna Valley REC is pleased to announce the winners of the 2024-2025 school year college scholarships from Basin Electric Power Cooperative and the Nishnabotna Valley Foundation. We would like to thank everyone who applied for a scholarship and congratulate those who were selected this year.

NVREC's scholarship program was established to support one of the cooperative's seven principles, education of members. The students were asked to explain the cooperative business model and how those principles influenced their high school career, their community or school involvement, and how they will continue to integrate those values into their future careers.



Delaney Goshorn
AHSTW High School
Adam and Katie

\$1,000 scholarship
Basin Electric
Power Cooperative



Edwin Mages
Harlan Community HS
David and Jill

\$1,000 scholarship
Lineworker school



Ava Monson
Harlan Community HS
Dave and Angie
\$1,000 Employee
Dependent Scholarship



Abe Schechinger
Riverside Community HS
Kevin and Tera
\$1,000 Scholarship



Quinn Koesters
Harlan Community HS
Dan and Kara
\$1,000 Scholarship



Gavin Bruck
Harlan Community HS
Todd Bruck
Melissa and Kurt Boettger
\$1,000 Employee
Dependent Scholarship



Linsey Keiser
Griswold Community HS
Trevor and Kristine
\$1,000 Scholarship



Noah Schmitz
Harlan Community HS
Mark and Jill
\$1,000 Scholarship



Emma Gordon
Riverside Community HS
Aaron and Joni
\$1,000 Scholarship



Rebecca Cody
Riverside Community HS
Randy and Lynn
\$1,000 Scholarship

SPRING INTO SAVINGS

Five energy efficiency tips for having a greener home

As the vibrant hues of spring begin to bloom and warmer summer days are upon us – our homes could use a seasonal tune-up too! Now is the perfect time to optimize energy efficiency and embrace eco-friendly practices. From simple adjustments inside your home to strategic landscaping projects, here are five essential tips to help you maximize energy efficiency this year.

RESET YOUR THERMOSTAT

Adjusting your thermostat to match the warmer weather can save on cooling costs.

CLEAN YOUR HVAC SYSTEM

Dust and debris can hinder your HVAC system's efficiency, so make sure to clean or replace filters regularly.

CHECK FOR LEAKS

Inspect doors, windows, and ductwork for leaks and seal them to prevent cool air from escaping.

UTILIZE NATURAL LIGHT

Open curtains and blinds during the day to let in natural light instead of relying on artificial lighting.

PLANT TREES OR SHRUBS

Strategically planting trees or shrubs around your home can provide shade and reduce the need for air conditioning.



Co-op selects Reynolds for Youth Tour

Nishnabotna Valley REC's Education Committee selected Jonas Reynolds to represent Nishnabotna Valley REC in Washington D. C. in June 2024.

Jonas is a student at Harlan Community High School and is the son of Bob Reynolds of Harlan and Jeff and Janell Leinen of Panama.

Iowa's locally owned electric cooperatives have been sending high school students to Washington D.C. every June since 1958. Nishnabotna Valley REC joins in that tradition to help teach area students about the cooperative business model and American government.

On the week long tour, students learn about electric cooperatives, American history, and walk away with a greater understanding of their role as an

American citizen.

They also participate in National Youth Day, visit with their elected legislators, and explore the sights around the nation's capital.



Jonas Reynolds

and public service are encouraged to apply.

Approximately 40 high school stu-

dents are chosen by their local electric cooperatives from across the state. The Iowa students join with more than 1,800 students from co-ops around the country for the tour.

If you have a high school student who is interested in participating in a future tour, visit NVREC.com for details or watch for information in the Jan/Feb 2025 edition of *News Lines*.



Embracing "all of the above" key to fulfilling growing electric demand



As the electricity demand grows regionally, policymakers must embrace an “all of the above” energy strategy to ensure a reliable energy supply.

Unfortunately, the discussion around meeting our nation’s electricity needs is often painted in black and white: transition as rapidly as possible to renewable energy sources like solar and wind power or continue to rely heavily on traditional fossil fuels such as coal and natural gas.

The solution is much more nuanced. Only by adopting a truly comprehensive approach can we ensure long-term grid stability.

While renewable energy sources like solar and wind have gained significant traction in recent years due to their environmental benefits, they also come with their own challenges. Variability in weather conditions can lead to fluctuations in power generation, making it necessary to have backup energy sources to ensure grid stability.

In addition, the intermittency of renewable energy sources necessitates the continued development of utility-scale energy storage solutions. These technologies would allow utilities to capture excess energy during times of excess generation and put it back on the grid when renewable generation production is low.

While traditional fossil fuels like coal and natural gas have long been

the backbone of the global energy system due to their reliability and affordability, they, too, have drawbacks. In recent years, concern over their environmental impacts has led to the early retirement of numerous coal generation facilities, putting additional strain on the nation’s power supply.

Nuclear power may represent another significant piece of an "all of the above" energy strategy. Nuclear energy offers a low-carbon electricity source with high reliability and base-load capacity. However, concerns about operating safety and radioactive waste disposal have tempered enthusiasm in recent decades.

Other potential sources of new generation include hydropower, biomass, and geothermal energy. Together, they could be important contributors to creating a diversified energy port-

folio.

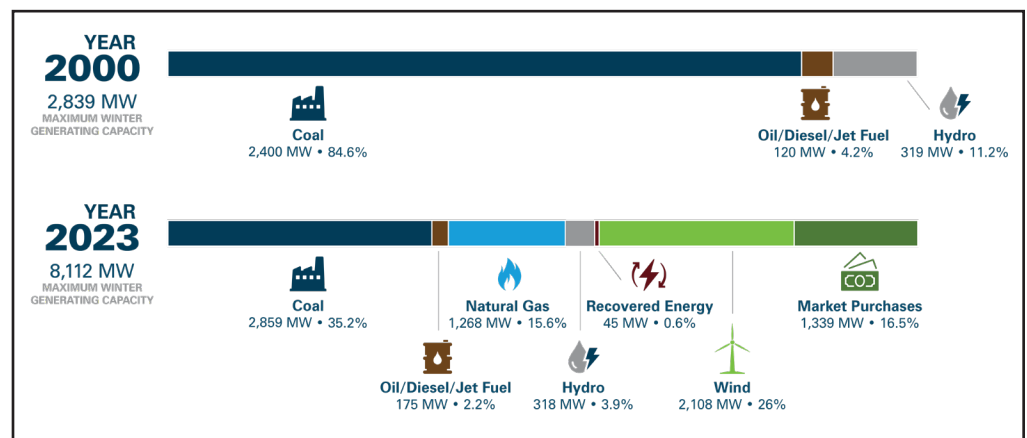
Hydropower, generated from flowing water, provides a reliable and flexible source of electricity, while biomass and geothermal energy offer renewable alternatives with the potential for significant expansion.

By embracing an "all of the above" energy strategy, we can leverage each energy source's unique strengths while mitigating their drawbacks. This approach not only enhances energy security and grid reliability, it also fosters innovation and economic growth across various industries.

Maintaining an "all of the above" energy strategy will require concerted efforts from governments, industry stakeholders, and the public. This strategy necessitates continued investment in research and development of advanced renewable energy generation, energy storage, and grid integration technologies. It also involves implementing policies that promote the deployment of affordable and realistic clean energy solutions while avoiding the continued premature retirement of coal-fired power plants.

Meeting electricity needs in the 21st century requires a holistic approach that embraces a complex energy strategy. Only by harnessing the strengths of a diverse mix of energy sources, can we ensure a reliable, affordable, and environmentally responsible power supply for future generations.

2023 BASIN ELECTRIC GENERATION PORTFOLIO



Nishnabotna Valley REC seeks nominating committee, board of directors candidates

The best part about being a member of NVREC is just that - it's *your* energy co-op.

You have a say in how your cooperative is run because membership also equals ownership.

Being locally owned, operated, and democratically run means you can trust your co-op to focus on members' needs, local priorities, and decisions that are best for your community.



Bryan Greve
Walnut, IA
District 5



Dave Applegate
Oakland, IA
District 6

Additionally, you have the opportunity to participate in the election process from nominating candidates to voting for the nominees. Directors are elected from the general membership to represent the cooperative.

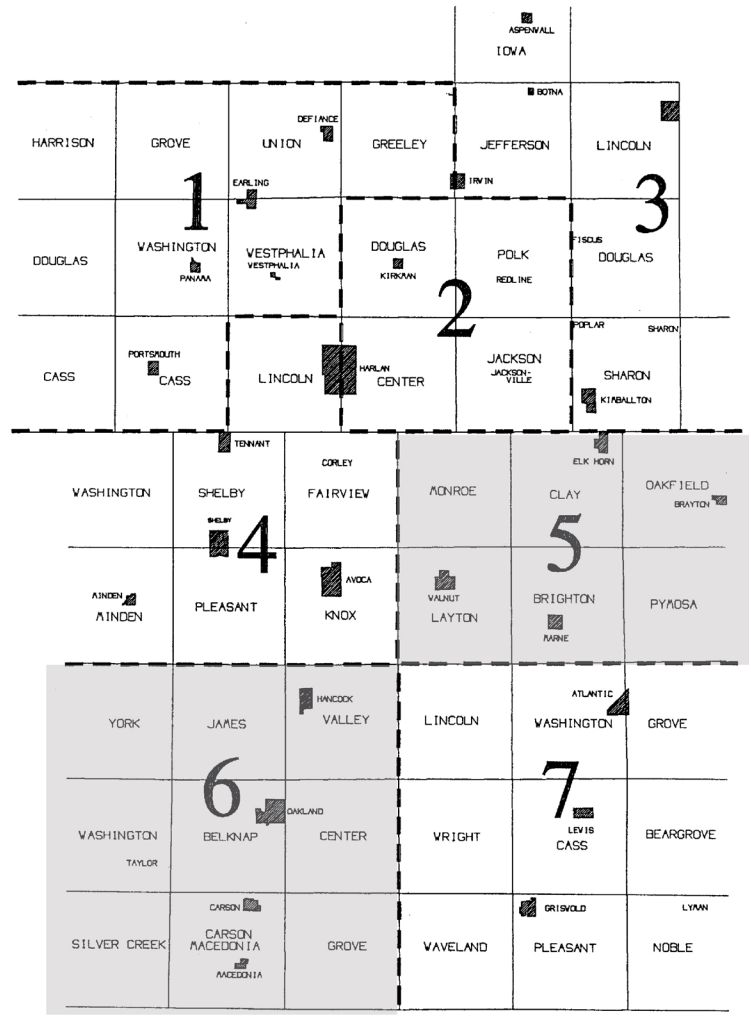
Each year, a nominating committee is assembled to find and recruit members willing to make the commitment of serving the membership for a three-year minimum term on the Nishnabotna Valley REC board of directors.

This year's nominating committee will meet once in early June to nominate and vote on the slate of candidates for the August 22, 2024 board election.

Two seats on the cooperative's board are up for election this year: district 5, currently represented by Bryan Greve, and district 6, currently represented by Dave Applegate.

If you are interested in running for the NVREC board of directors and live in one of these districts, or serving on the nominating committee, please contact Janell Leinen at 712- 755-2166 for a copy of the bylaws and more information.

Board District Map



--- DENOTES DIRECTOR DISTRICT LINES

Because Nishnabotna Valley REC is a cooperative, the membership elects a board of directors to represent their interests. Directors are responsible to the members for the overall management of the cooperative, establishing the rates and policies of the cooperative, and helping decide how the resources and services of the REC are to be used for the benefit of the members.



1317 Chatburn Avenue, PO Box 714 • Harlan, Iowa 51537

Office Hours: Monday-Friday, 7:30am to 4:00pm

Telephone: (712) 755-2166 • Fax: (712) 755-2351

Website: NVREC.com • Follow us on Facebook!

Outages after hours, holidays, weekends: (800) 234-5122

Nishnabotna Valley Rural Electric Cooperative is an equal opportunity provider; employer, and lender.

President..... Donna Olson
Vice President Gene Kenkel
Secretary-Treasurer Bryan Greve
Director Dave Applegate
Director Darrell Stamp
Director Tom Pattee

Director Galen Grabill
Chief Executive Officer Bill McKim
Director of Operations Kert Barnum
Manager of Administrative Services..... Kara Meiners
Communication Specialist..... Janell Leinen

Nishnabotna Valley REC

PO Box 714

Harlan, IA 51537

Address Service Requested

PRSR STD
U.S. Postage
PAID
DPC



A Touchstone Energy® Cooperative 

Nishnabotna Valley REC will provide safe and reliable electric service to its members in a valuable, sustainable, and environmentally responsible manner.

**SUMMER
OFFICE HOURS
BEGIN THURSDAY,
MAY 30**

**Monday - Thursday
7:00 a.m. - 4:30 p.m.**

**Friday
7:00 a.m. - 11:00 a.m.**

**Summer hours will
remain in effect through
Wednesday, September 4, 2024**

Rebuilding resilience

Restoring power after the April 26 tornado



Storm photos, page 2



**HELP YOUR CHARITY
WIN \$3,000 THIS JUNE!**

See more on page 3 or visit
IowaShineTheLight.com

The Nishnabotna Valley REC office will be closed for Memorial Day on **Monday, May 27.**

The office will also be closed on **Thursday, July 4** for Independence Day.